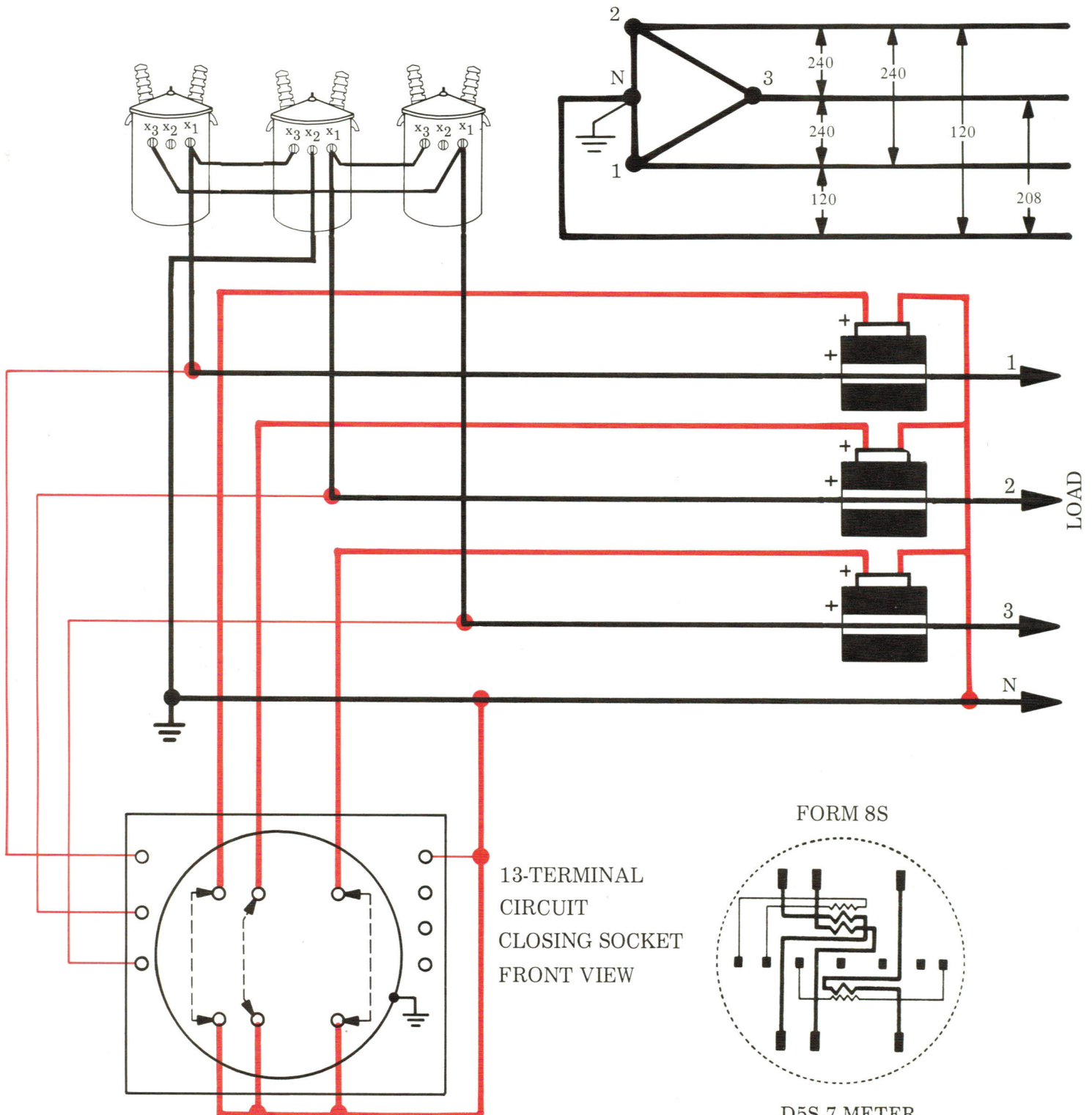


# THREE-PHASE, FOUR-WIRE DELTA

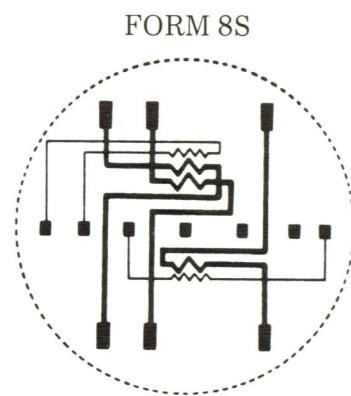
Measurement of energy on a three-phase, four-wire Delta service with 3 CT's and a 2-stator meter.

Should be considered where wire size is too large to be used in "Most Economical Method."

conventional method...



13-TERMINAL  
CIRCUIT  
CLOSING SOCKET  
FRONT VIEW



D5S-7 METER  
INTERNAL DIAGRAM  
FRONT VIEW

THE REGISTER MULTIPLIER EQUALS THE CT RATIO  
FOR SECONDARY-RATED METERS